

## LM-6000SA CNC SCREW CUTTING MACHINE



### LM-6000SA

#### ※ SPECIFICATIONS

| Item                                  | Model | LM-6000SA   |
|---------------------------------------|-------|---|
| Width of four guideway                |       | 1460 mm   |
| Distance between center               |       | 6200mm  |
| X axis travel                         |       | 5800mm  |
| Z Axis travel                         |       | 500mm   |
| A axis                                |       | 360 degree  |
| Main Motor                            |       | αil 15 / 7000(15/18.5KW)                                    |
| Milling tool bar                      |       | φ 50 mm   |
| Milling cutter                        |       | Max dia. φ 250mm  |
| Spindle Speed                         |       | 1- 1500 rpm (Gear 1:4) with oil coolant                     |
| C axis bore(with disc brake function) |       | φ 70mm  |
| A. C. axis speed                      |       | A axis 1000°/min, C axis 4000°/min                          |
| A axis servo motor                    |       | αiF22 / 3000 ( 4.0 KW)                                      |
| C axis servo motor                    |       | αiF30 / 3000 ( 7.0 KW)                                      |
| X axis ball screw                     |       | φ 63mm P=12mm   |
| Z axis ball screw                     |       | φ 32mm P= 6mm   |
| Rapid traverse                        |       | 5000 mm / min   |
| Feed rate                             |       | 1-5000mm / min  |
| X,Z axis servo motor                  |       | X: αiF40/3000 with fan (9.0KW)<br>Z: αiF22 / 3000 ( 4.0 KW) |
| Manually Tailstock quill diameter     |       | φ 165mm / MT5#  |
| Tailstock quill travel                |       | 250mm   |
| Machine size                          |       | 9800mm*4375mm*2500mm  |
| Machine net weight                    |       | 28700/kgs   |

#### ※ Standard Accessories

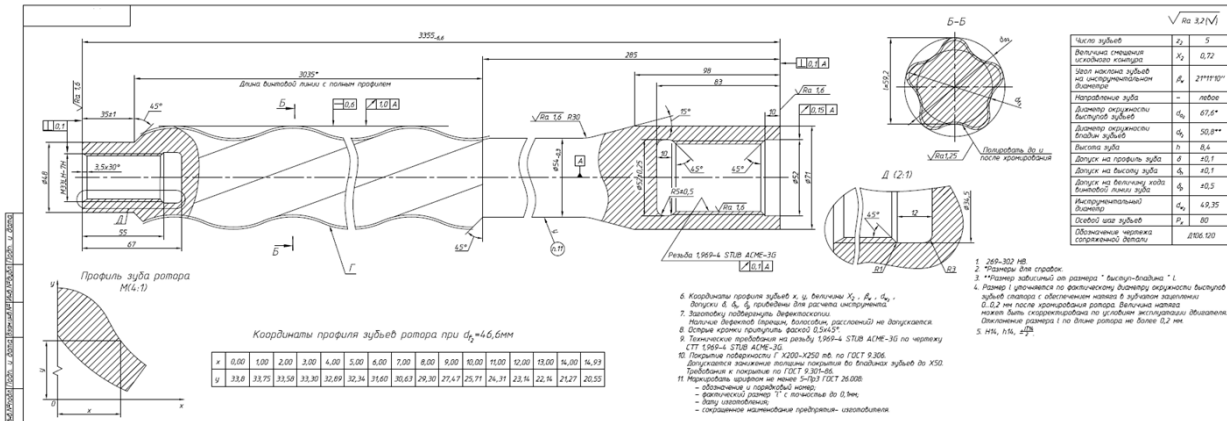
|  |
|--|
| 1. FANUC Oi-MD 8.4" LCD colorful controller  |
| 2. 16" 3-jaw scroll chuck(Strong type)/Made in Taiwan                                  |
| 3. Workpiece support steady *5 (One point hydraulic)<br>(Capacity : φ 120mm ~ φ 200mm) |
| 4. Automatic lubricator  |
| 5. Manual two steps tailstock  |
| 6. Moving monitor  |
| 7. Cooling system 6BAR   |
| 8. Full splash guard   |
| 9. Work light  |
| 10. Alarm light  |
| 11. Remote MPG   |
| 12. RS-232 interface   |
| 13. Heat exchange for control cabinet  |
| 14. X-axis lead screw linear way support   |
| 15. Screw type chip conveyor   |
| 16. Steel Chip Conveyor with Flush chip & cart   |
| 17. Oil Skimmer  |
| 18. Outside power transformer 40kva without stabilizer                                 |
| 19. Tools & tool box   |



1. 7 spiral
2. Length of workpiece: 3000 mm
3. No supporter
4. First milling
  - S: 320 rpm
  - F: 480 mm / min
  - mill 5 cutter
  - depth of each cutting: 2.2 mm
  - machining time: 36 min
5. Finished milling
  - S: 500 rpm
  - F: 1000 mm / min
  - Pitch: 3 mm
  - Machining time: 54 min 43 sec

1. 4 spiral
2. Length of workpiece: 2000mm, OD:113.05mm
3. 3 sets supporter
4. First milling
  - S: 320 rpm
  - F: 480 mm/min
  - mill 5 cutter
  - depth of each cutting: 3.5 mm
  - machining time: 1hr 50 min
5. Finished milling:
  - S: 500 rpm
  - F: 1000 mm/min
  - Pitch: 3.5 mm
  - machining time: 4hr 30 min

**Example drawing of processing**



永峻昌工業有限公司  
EVEROX INDUSTRIAL CO., LTD.  
41356台中市霧峰區四德路505巷20號

20, Lane 505, Szu-te Rd., Wufeng Dist., Taichung City 41356, Taiwan  
TEL: 886-4-2332-8098(代表號) FAX: 886-4-2332-8099  
E-mail: everox@ms7.hinet.net http://www.everox.com.tw